

O2™ Audio-Visual Module Installation Guide

Document Number 007-3483-003

CONTRIBUTORS

Written by Judy Muchowski

Illustrated by Dany Galgani

Production by Carlos Miqueo

St. Peter's Basilica image courtesy of ENEL SpA and InfoByte SpA. Disk Thrower image courtesy of Xavier Berenguer, Animatica

© 1998, Silicon Graphics, Inc.— All Rights Reserved

The contents of this document may not be copied or duplicated in any form, in whole or in part, without the prior written permission of Silicon Graphics, Inc.

RESTRICTED RIGHTS LEGEND

Use, duplication, or disclosure of the technical data contained in this document by the Government is subject to restrictions as set forth in subdivision (c) (1) (ii) of the Rights in Technical Data and Computer Software clause at DFARS 52.227-7013 and/or in similar or successor clauses in the FAR, or in the DOD or NASA FAR Supplement. Unpublished rights reserved under the Copyright Laws of the United States. Contractor/manufacturer is Silicon Graphics, Inc., 2011 N. Shoreline Blvd., Mountain View, CA 94043-1389.

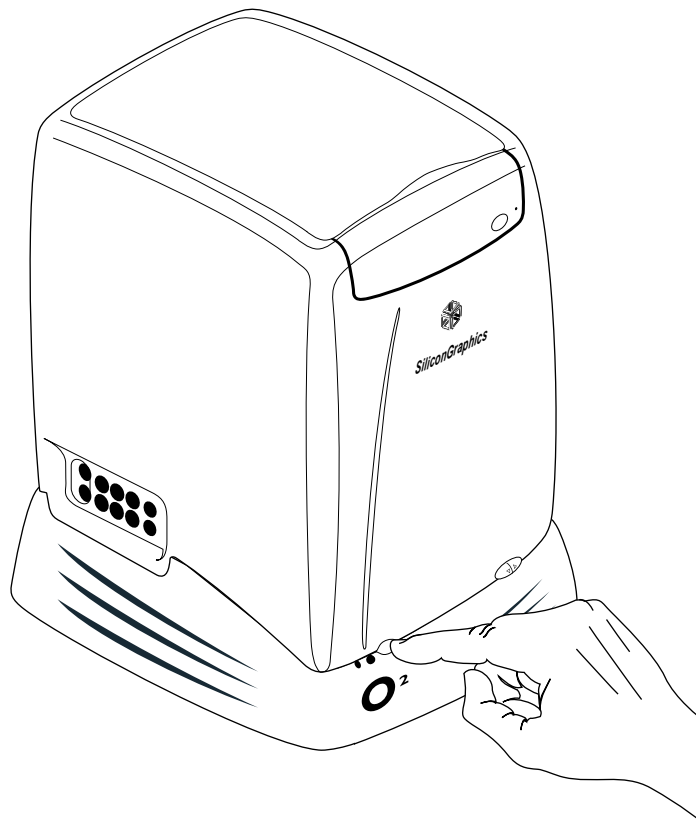
Silicon Graphics and the Silicon Graphics logo are registered trademarks and O2 and O2Cam are trademarks of Silicon Graphics, Inc.

Contents

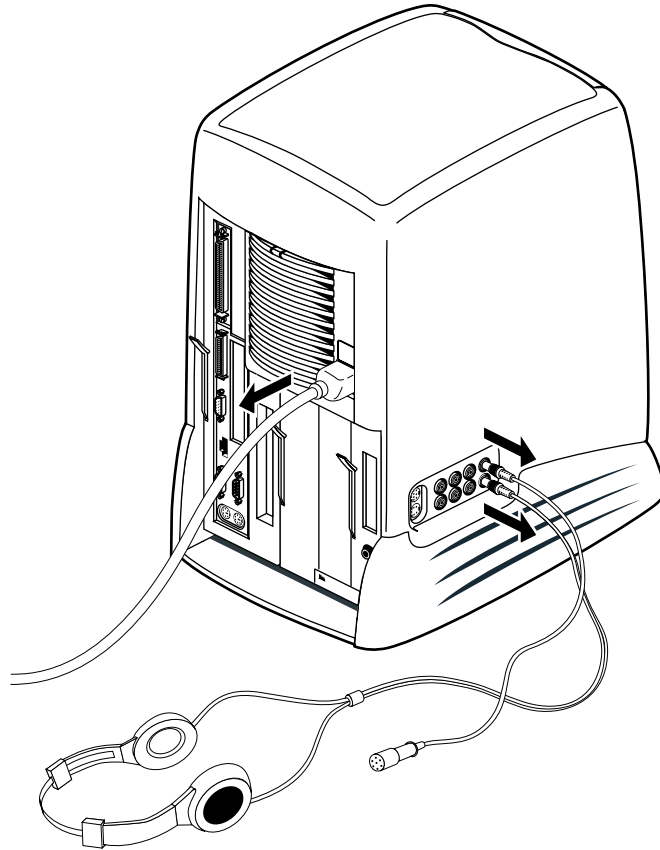
Installing the Audio-Visual Module in the O2™ Workstation	1
Using the O2Cam Digital Camera	7
Taking a Live Video Snapshot	9
Technical Specifications	10

Installing the Audio-Visual Module in the O2™ Workstation

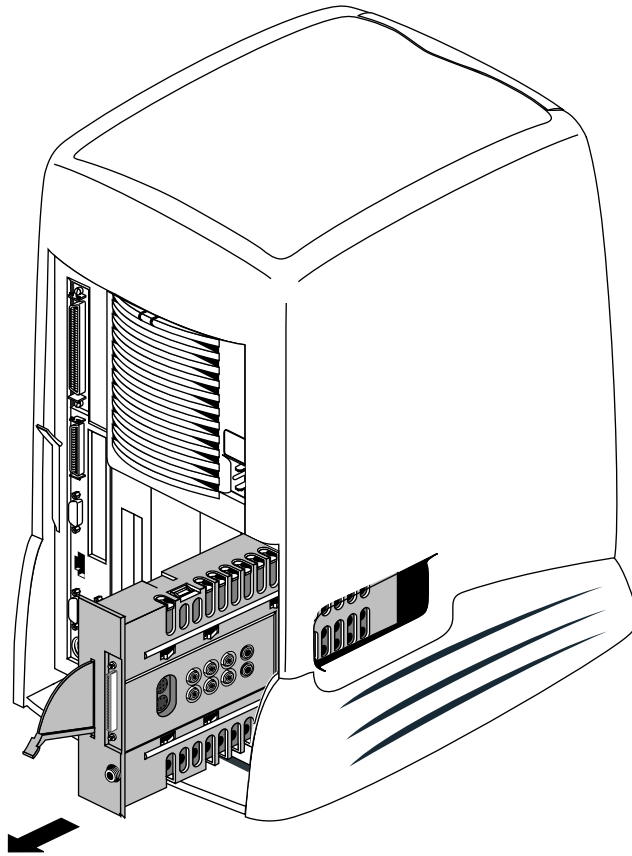
To install the audio-visual module, follow the steps below.



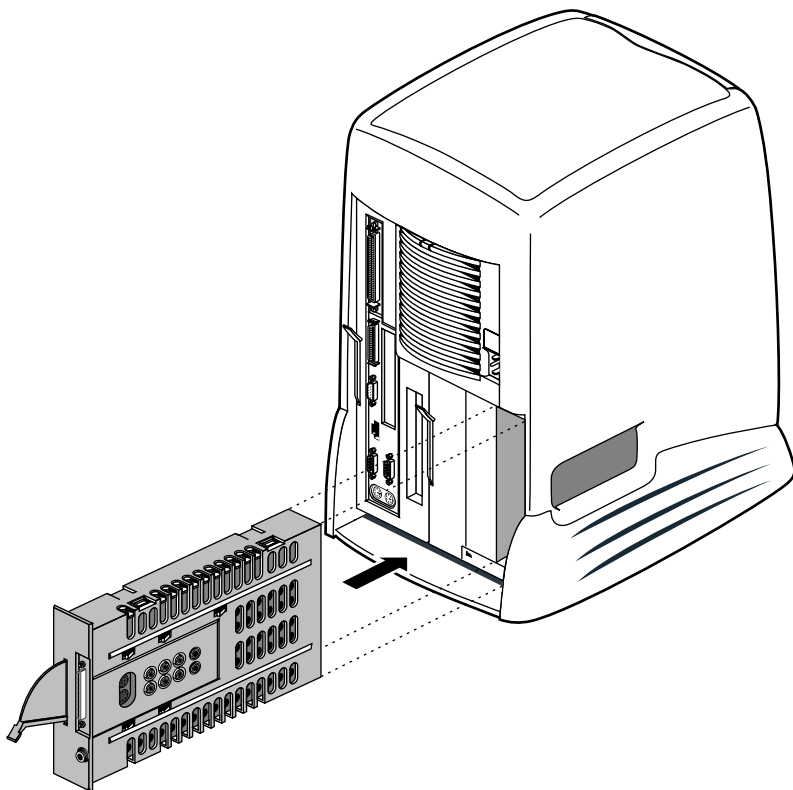
1. Turn off the workstation.



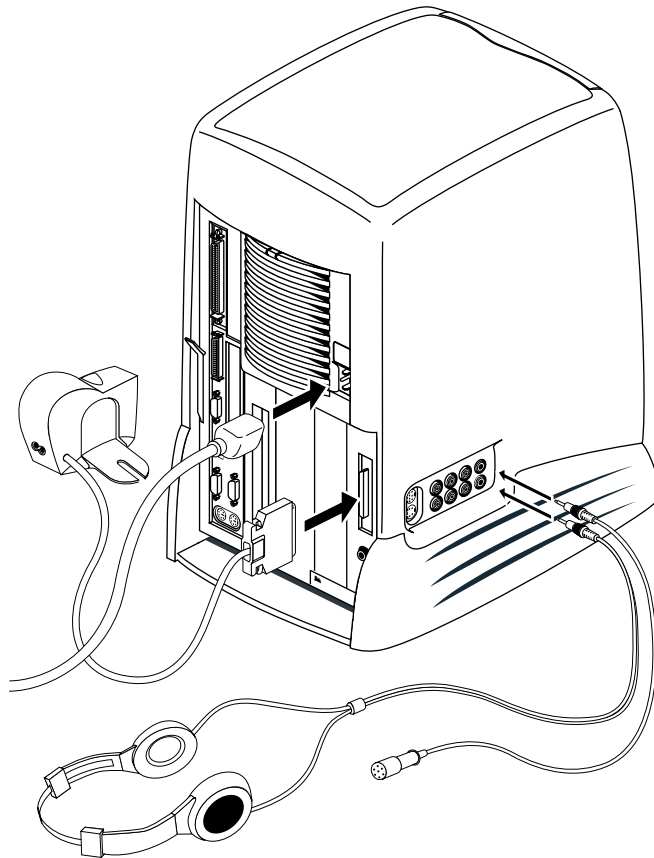
2. Remove the power cable and any cables that are connected to the side of the audio module. The audio module is on the extreme right as you face the rear of the workstation.



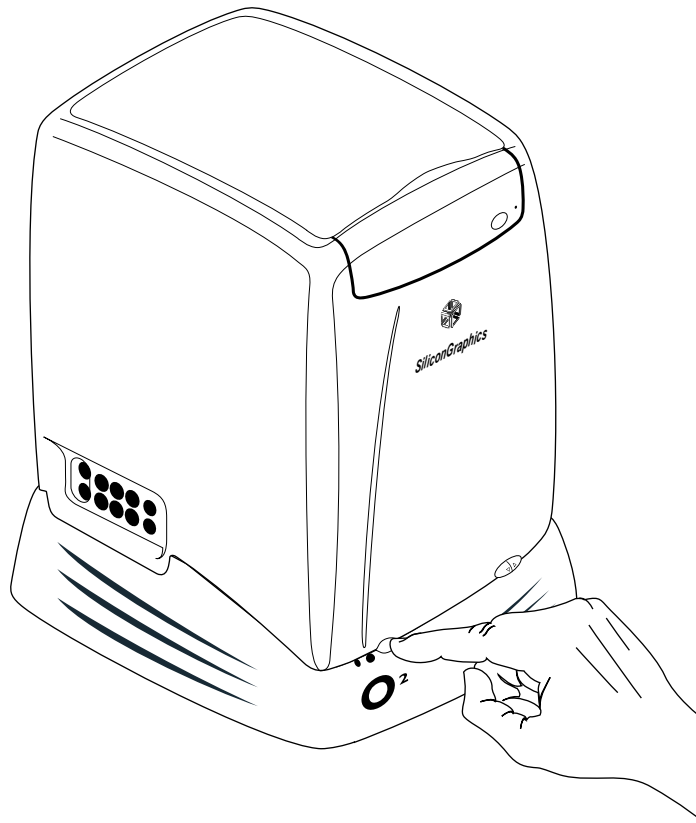
3. Remove the audio module by pulling down the lever and sliding it out of the chassis.



4. Slide the new audio-visual module into the chassis and push the lever up to lock the module in place.

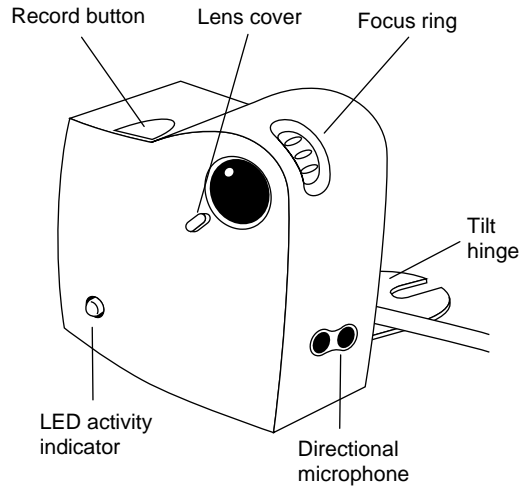


5. Reconnect the power cable and any audio cables you removed earlier.
6. Connect the camera cable. The O2Cam™ digital video camera must be connected before turning on the workstation in order to load the camera software.

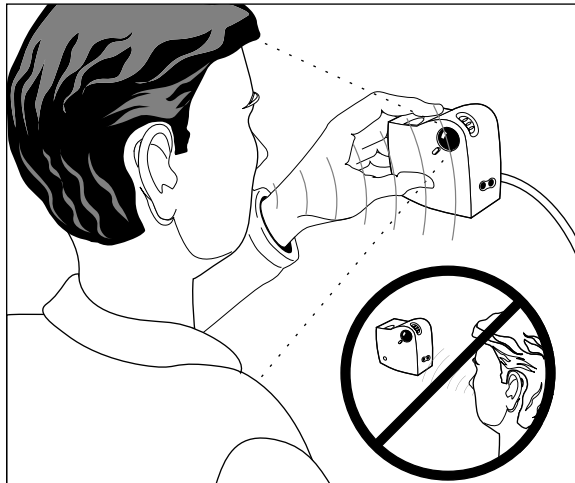


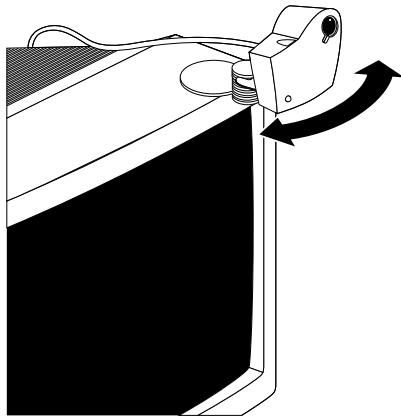
7. Turn on the workstation.

Using the O2Cam Digital Camera

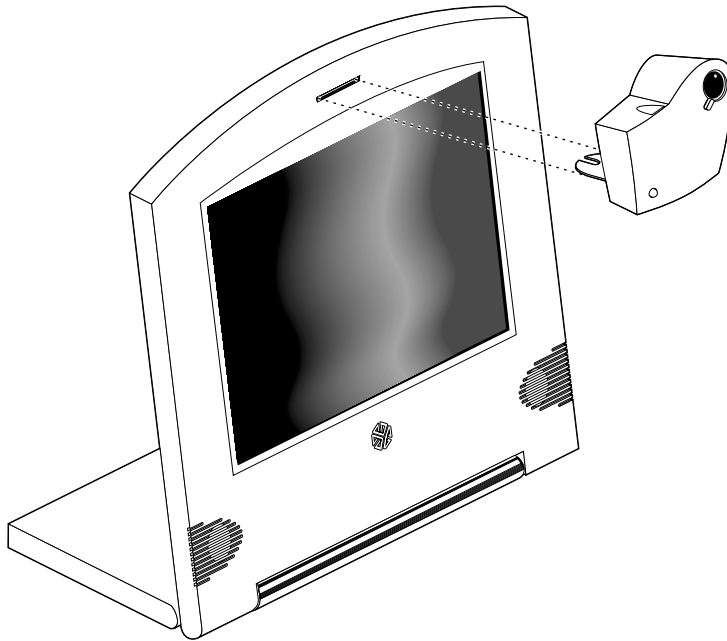


The illustration above shows the O2Cam's features. The camera has a built-in microphone that points in the same direction as the lens. When recording audio, speak toward the front of the camera (*not* toward the microphone on the side). See the illustration below.





If you wish, position the camera on your monitor.



Or you can attach the camera to the Presenter 1280 flat panel monitor.

Taking a Live Video Snapshot

If you connected the O2Cam to your workstation before turning on the workstation, you will see a camera icon on your desktop.

You can use Media Recorder to create a new image file by taking a live video snapshot. To open Media Recorder, double click the camera icon. The Media Recorder window appears.

To take a live video snapshot:

1. Make sure the lens cover on the camera is open.
2. Click the *Image* menu button (located under the label “Choose Media and Source”) to reveal a menu, then choose Image from Connected Source > O2Cam.
3. Make sure that the subject is positioned correctly in the Media Recorder viewing area.

The viewing area reflects the image that will be captured.

4. Click the Record button (the button with the red circle) to take the picture.

If the Clip Bin is displayed, the image filename appears in the Clip Bin as soon as the snapshot has been taken.

5. To view the image, click the Play button.

For more information on using digital media software applications, see the online *Digital Media Tools Guide*. From the Toolchest, choose Help > Online Books > SGI EndUser > *Digital Media Tools Guide*.

The *Digital Media Tools Guide* is also in the Technical Publications Library on the Silicon Graphics homepage at

<http://www.sgi.com/Technology/TechPubs>

Technical Specifications

Technical specifications for the O2Cam are in the online *O2 Hardware Reference Guide*. From the Toolchest, choose Help > Online Books > SGI EndUser > *O2 Hardware Reference Guide*.

The *O2 Hardware Reference Guide* is also in the Technical Publications Library on the Silicon Graphics homepage at <http://www.sgi.com/Technology/TechPubs>

Tell Us About This Manual

As a user of Silicon Graphics products, you can help us to better understand your needs and to improve the quality of our documentation.

Any information that you provide will be useful. Here is a list of suggested topics:

- General impression of the document
- Omission of material that you expected to find
- Technical errors
- Relevance of the material to the job you had to do
- Quality of the printing and binding

Please send the title and part number of the document with your comments. The part number for this document is 007-3483-003.

Thank you!

Three Ways to Reach Us

- To send your comments by **electronic mail**, use either of these addresses:
 - On the Internet: techpubs@sgi.com
 - For UUCP mail (through any backbone site): *[your_site]!sgi!techpubs*
- To **fax** your comments (or annotated copies of manual pages), use this fax number: 415-965-0964
- To send your comments by **traditional mail**, use this address:

Technical Publications
Silicon Graphics, Inc.
2011 North Shoreline Boulevard, M/S 535
Mountain View, California 94043-1389